

**SWAN LAKE FIRST NATION – MATRIX SOLUTIONS  
INC. PARTNERSHIP**

**INDIGENOUS CONSTRUCTION MONITORING**

**WEEKLY REPORT**

**SPREAD 7**

**SEPTEMBER 17<sup>TH</sup> TO SEPTEMBER 22<sup>ND</sup>**

## 1. PURPOSE OF THIS REPORT

The report is a weekly summary of the daily reports submitted by the Indigenous Construction Monitors that are working on spread seven. The social and cultural findings have been tabulated with locations and mitigation measures below. A summary of the construction activities has been summarized for the weeks of September 17<sup>th</sup> to September 22<sup>nd</sup>, 2018.

### Social and Cultural Features

Field Observation	# of occurrences	Description and Mitigation Measures	Mitigation Status	Further Action Required (Yes/No)
Traditional Use Area (hunting, fishing, gathering, trapping)	N/A			
Rock Formations (rocks of significance, tipi rings, etc.)	N/A			
Artifacts	N/A			
Bones	1	Souris River SSKP 907+325 status unidentified reported to environmental coordinator	unkown	yes
Potential Gravesites	N/A			

### Environmental Features

Field Observation	# of occurrences	Description and Mitigation Measures	Mitigation Status	Further Action Required (Yes/No)
Medicinal or Cultural Plants	1	Bulrushes in Wetland MB-054 SSKP 840+727	ongoing	
Aquatic Life	N/A			
Animal Observations or Burrows	1	Sandpipers		
Bird Nests	N/A			
Trees (Red Willow)	N/A			
Wetlands	4	Class 3 Wetland MB-073	ongoing	

		SSKP 850+100 Semi-Permanent Marsh Class 4 Wetland ID MB-054 SSKP 840+727 Wetland: 1 Seasonal Marsh Class 3 Wetland Complex MB-1051b. Wetland: 1 Semi-Permanent Marsh Class 4 Wetland Complex MB-077.		
Watercourse Crossing	1	1 Black Creek	Status the HDD bore is ongoing and Test crew is testing pipe for bore.	

### **Additional Observations and Summary of Activities or Concerns**

Weekly activity included attending daily tailgate meetings and continue to check access points on the ROW on Spread 7. Monitored the spill at SSKP 840+727 in a Semi-Permanent marsh Class 4 Wetland Habitat.

September 17, 2018 - Safety included: Slip's, Trip's, Fall's. pay attention to the terrain. Practice good housekeeping. Clean up debris immediately. Mark and identify.

Keep walkway's clear of clutter, pick up any obstacle's that are laying around.

All employees are responsible for safety. Safety is 24/7 and its benefits family, friends, co-workers and community. Be aware of students and children in Brandon area and gravel roads as school is in season.

Weather forecast: Cloudy. 30 percent chance of showers late in the morning and in the afternoon. High 11. UV index 2 or low.

Environment: Keep all areas of work clean and gravel roads travelled as well. Minimize the number of environmental non-compliances. Provides Environmental Due diligence. Increase and strengthen the communication links between Contractors and Enbridge Construction and Environmental staff regarding environmental considerations and mitigation. Provide daily on the job awareness/education through assessment and communication of the environmental considerations and mitigation.

SF # 8 Workers picking up metal shavings from the pipe and raking the ground near the pipes. 3 side booms moving the pipe and the prep machine to start bevelling the pipe at SF # 8. SF # 13 Excavator digging up open ditch. D8-dozer starting to strip topsoil. SF # 26 Welding bore pipe and prepping bore pipe automatic welder being used. SF # 27 Washing station, very congested with D8 and D6-dozers. 1 excavator. No concerns. Very tidy and clean at SF # 27. SSKP 818+050 End Prep crew bevelling pipe ends preparing pipe to be welded. The Prep crew did great job with communication and being careful lowering and hoisting bevel machine around pipe and workers. At the Bone Yard was very congested unloading booms and automatic welder's for welding mainline. Also, in Bone Yard the welders were Transitioning and welding 19.1 mm pups on 3 test heads. They will also be mobilizing test heads and equipment to black Creek for Test. The intersection of 137W + 41N a truck carrying a D8 Dozer was hung up on the edge of road. He turned wide to make corner but ended up catching the edge with back of trailer. He stopped froze scene and got a hold of his supervisor letting him know the situation. It was safely done and properly mitigated good job on the contractor for following procedures. Headed into yard at Banister in Brandon, MB to do the advanced environmental training and the detailed biosecurity training with the monitors present too for Enbridge. Work Forecast: Return to monitor the line to sweep an area for findings (bones, artifacts, wildlife, etc.)

September 18, 2018 – Safety included: Congested sites. Watch for heavy equipment. Wear proper P.P.E.

Weather forecast: Mix of sun and cloud. 30% chance of showers in the morning and afternoon. Fog patches. High of 16. UV index 5

Environment: Keep all areas of work clean and gravel roads travelled as well. Minimize the number of environmental non-compliances. Provides Environmental Due diligence. Increase and strengthen the communication links between Contractors and Enbridge Construction and Environmental staff regarding environmental considerations and mitigation. Attended tail gate meeting. SF # 44, no activity. No concerns. SF # 28, Hauling material east of SF # 28 to the wetland ramp west of SF # 28. SF # 13, workers with the hydro-vac truck pumping out the open ditch. Very congested. SF # 3, D8-dozer stripping the last 500m of topsoil east of the SF. Installing a mechanical clean station east of the SF. Drove to West Souris station to show monitors where our Line 3 replacement will hook up to. The stations are to help control flow and to shut down if required. Also, went to sweep an area at SSKP 858+000. The trees were cut down and was harder to sweep area with trees covering the ground. We were able to find deficiencies on our way to assess this area and was good opportunity to show monitors what to look for when monitoring work being done. 14W + 44N East of intersection Rd # 49 sign broken and blown away needs repair. Rd # 40 East sign damaged no sign needs repair. Designated construction sign knocked down at intersection 123W + 44N on NE side. Road # 13 excavator digging ditch, ditch witch boring hole and picker truck unloaded matts. SSKP 822+000 Road # 15 North Wetland ID MB-1039-7 assessed wetland, it's in good condition and caepla carpet installed. Went to Souris River and close to the river within our boundary found some unidentified bones. Contacted the environmental coordinator and provided their location. SSKP 908+000 close to Souris River the section is welded for the bore crossing that will be used for Souris River. SSKP 899+450 at Black Creek bore they had some discharge break through the surface and they have assembled cleaning crew to clean up the surface. Bones:1 at Souris River SSKP 907+325 status unidentified reported to environmental coordinator Work forecast: Assess the Pipe Gang crew welding mainline and assess sensitive areas.

September 19, 2018 – Safety included: Wear the proper P.P.E. to the work sites. Watch for moving equipment and keep eye contact with operator.

Weather forecast: Cloudy with 60 percent chance of showers in the morning. Clearing in the afternoon. High 13. UV index 4 or moderate.

Attended tailgate meeting. SF # 4, Observing the welders starting main line welding. Walked around parked equipment checked for oil and gas leaks. No concerns. Two Banister's truck's unloading 2 D8-dozers. 3 side booms putting the shacks over the pipe for the welding. Very congested. SF # 5, Workers doing the tie in welds. Welding to the bore section. SF # 28, Moving equipment from SF # 28 to SF # 29 west. 2 rock trucks hauling sand from east of SF # 28 to west of SF # 28. Hydro-vac truck cleaning up the swamp west of SF # 28. SSKP 812+700 Main gang welding was very congested and very productive as well as safe. Good job for the congestion they have to work with. Showed junior monitor the process of the checking the bevels so there in good condition, the cleaning off ends as well and the pre-heating inside the pipe as well as outside. They do a Root pass with internal welder than a hot pass than finally a cap to finish weld. Also buffing the pipe for a better seal and to get rid of sharp splatter of

metal. Also showed what the many different numbers mean on the pipe. SSKP 850+100 The Access crew was building a wetland ramp through a Seasonal Marsh Class 3 Wetland Habitat. The Dozer pushed soil over the ramp and an Excavator helped touch it up. SSKP 870+550 The Grade crew stripped and piled top soil. They have good conditions on the ROW to get lots done as there's no hills or wetlands. Its flat and they'll get great production. SSKP 899+550 Fluid from bore made its way to surface on east side of Black Creek watercourse. Yesterday it was seeping on the west side. The fluid wasn't as bad on the east side so it'll make it better for clean up. They are using water and the hydro vac to suck it up and clean it effectively. Good job on the contractors working together as SA Energy, Banister and Badger worked as a Team.

#### Deficiency List

Finished Construction sign damaged knocked down south of Rd # 23.

Rd # 53 sign knocked down on 41N east.

Also, on 41N Between road # 52 & 53 Children's Playing sign knocked down on east side.

Wetland: 1 Seasonal Marsh Class 3 Wetland MB-073 SSKP 850+100 status work in progress

Work forecast: Go to observe the line and check out the wetlands.

September 20, 2018 – Safety included: Heavy equipment, team work, keep in good eye contact with heavy equipment operator. Use the buddy system when working in groups. Good communication, let your supervisor know where you're going, what time you will return, what your plans are.

Weather forecast: Cloudy in the morning, rain in the afternoon. 5 to 10 mm rain.

High 10. UV index 3

Attended 6: A.M. tailgate meeting. SF # 4 Welder's pre-heating the inside of the pipe to do the internal automatic welder. Side boom moving the welding shacks onto the pipe for the welders to start welding. SF # 28, Hydro vac was in the wetlands pumping up the contaminated water. Enbridge soil sampler was there to take soil samples from the wetlands to get tested from SF # 28 west. A mini excavator was digging up the contaminated soil at the wetlands of SF # 28 west. SF# 60, welders welding in the welding shack on the bore pipe. Clean and organized. Leaving for Banister yard, Brandon from SF # 60 Black creek. After our morning meeting instead of going to Black Creek we were informed of an environmental spill that we would now go and monitor to see how it was contained. The location was at SSKP 840+727 in a Semi-Permanent marsh Class 4 Wetland Habitat. The spill occurred when an excavator was placing matts when a line ruptured from the machine. It leaked into the wetlands and had to be contained. The National Energy Board (NEB) was made aware and the mitigation procedures were set in place to contain the spill. They used a Mini Excavator to dig up the contaminated soil and loaded it to a Nodwell Tracked Carrier. They brought the soil to the road in contamination bins. Also, a Hydro-vac had rubber tracks to get into the soft area and the unit was used to suction up the contaminated water, the Hydro-vac would then take it to the road where they would transfer it to the Hydro-vac trucks. They have taken soil samples to check for contamination levels. In this same area of spill, I noticed 3 species of birds in our ROW. There was Mallard ducks, Comrade's and Sandpiper birds. I was able to get picture of Sandpiper on our ROW. Also, in area were

many Bulrushes that are used by indigenous peoples for medicinal, food and crafting. The people who helped with the containment of the spill did an excellent job. From Enbridge, Banister and Badger the teamwork was great and everyone came together to make sure the job was done properly. Just east of the spill site the Access crew was building a Wetland ramp. SSKP 899+850 At Black Creek they are welding test onto bore section for the HDD. Also, in area I assessed the clean-up around Black Creek and it looks a lot better now as they've been using water to mix with clay on the surface than using Hydro-vac to get rid of it. Wetland: 1 Semi-Permanent Marsh Class 4 Wetland ID MB-054 SSKP 840+727 Status spill being contained and monitored. Ongoing Indigenous Medicinal Plant: 1 Bulrushes in Wetland MB-054 SSKP 840+727 Status being mitigated with wetland ramp and work ongoing.

Animal Observations: 1 Sandpipers in our ROW, status be careful of wildlife and work is ongoing

Work forecast: Check to see progress of environmental clean-up at Road # 28 west and Black creek. Monitor sensitive areas with environmental mitigations.

September 21, 2018 – Safety included: Weather, heavy equipment, colder in the morning extra clothes, warm socks. Keep eye contact with operator.

Weather forecast: Mainly sunny. Increasing cloudiness late in the morning. Fog patches in the morning. Wind becoming west 20 km/h early in the afternoon. High 14. UV index 4 or moderate.

After morning meeting our objectives would be to assess the status of the environmental spill at Road # 28. Also, the senior/junior monitors would monitor the Pipe Gang and Poor Boy crews weld in a sensitive Wetland Complex Class 4. SSKP 822+225 at Rd # 15 Crews were disassembling the cleaning station as it is no longer required in that area. SSKP 840+727 At the environmental spilling the Semi-Permanent Marsh Class 4 the work being done to contain contamination is complete they will now wait for the results of the samples taken to determine the levels of contamination to see if any further work in wetlands is required. In the same area I seen more Sandpipers on the ROW. They are actively feeding on small prey and the area is a great area for their eating habits as its swallow enough for them to walk in water and feed. SSKP 841+050 The Access crew was hauling material from the sand hills east of RD # 28 to the wetland ramps west of RD # 28 and also sweep/hydro-vac ahead. SSKP 818+800 Pipe Gang and Poor Boy Welding crews working in a Semi-Permanent Marsh Class 4 Wetland Complex MB-1039. The crews did a great job working within the wetland ramp and staying away from the Caepila carpet as some crews and damage them. At Road # 14 crossing the ROW is really wet and muddy and it was being carried onto public road as people crossed. They designated workers to clean it off with shovels to keep the road clean. Good job on the contractor Banister. Work forecast: Rain in forecast will monitor crews working in sensitive areas. Go observe the line and check out the wetlands

September 22, 2018 – Safety included: Slips, trips, falls. Watch footing. Be aware of your surroundings. Know the location of the medic truck when arriving at the work site.

Weather forecast: Periods of rain and snow. Wind northwest 30 km/h gusting to 50. Low plus 2.



Attended tailgate meeting. After our morning meeting the senior and junior monitors would go assess crews that weren't sent home due to rain. We would monitor where we could. SF # 5, Excavator digging at the open ditch. Raining and muddy. SF # 9, Welders in the welding shacks. Checked the right of way and where the welders are welding for any metal debris, no concerns. Clean and tidy. SF # 10, Poor boy is between SF # 10 and SF # 11, side booms moving welding shacks from SF # 10 to SF # 11. SF # 12, 4 welders shacks being moved to east to SF # 13. SSKP 825+490 The Tundra Bore section was being welded on north side of bore in trench box on a Seasonal Marsh Class 3 Wetland Complex MB-1051b the trench box had a great seal and the hole was dry. SSKP 853+000 between Rd # 30 & 31 the Grade crew was stripping topsoil and through a Semi-Permanent Marsh Class 4 Wetland Complex MB-077. SSKP 899+800 at the Black Creek (WC) bump the section down and re-skid for hydro-test. Fill test section for testing tomorrow Sunday September 23rd. Also, while at Black Creek the conditions of the ROW are very muddy now with the extra rain we received today. I was walking on the matts and they are slippery with the water and mud mixed its dangerous for workers and vehicles as I was also sliding on matts just driving slow. The water truck was also stuck and was getting hooked up to get pulled out. I spoke with the foreman with Banister for Test and asked if he'd be okay or needed any help. He said thanks and said he'd be fine.

#### Deficiencies

Rd # 21 Road Crossing rough needs paving.

Rd # 36 on north side of crossing about 200 m west on south boundary there is a tree that's broken in half that could of been caused by clearing crew it also has a widow maker on top of it and is a hazard as it can fall close or within our work space. Tree is about 2 feet off our ROW work space. Also at Rd # 36 another tree broke in half where clearing was done, it's on the south side of road and is 200 m west on south boundary.

Wetland: 1 Seasonal Marsh Class 3 Wetland Complex MB-1051b.

Wetland: 1 Semi-Permanent Marsh Class 4 Wetland Complex MB-077.

Watercourse: 1 Black Creek Status the HDD bore is ongoing and Test crew is testing pipe for bore.

Trees: 2 Poplar trees damaged from clearing crew, broken in half just outside our boundary. Status need to be removed or replaced.

Work forecast: Will evaluate Monday September 24th for work scope based on weather conditions. If it keeps raining, we may have limited areas to monitor.

## Photos of Sites Visited & Topics Discussed This Week



Description & Location: 137W + 41N  
Truck end sunk from soft road edge  
Scene frozen and help sent to help get out  
Heavy weight a factor/Facing east  
Good job with following procedures



Description & Location: SSKP 818+050  
End Prep crew beveling pipe ends  
Facing east



Description & Location: Bone Yard-Facing North  
Very congested area  
Unloading side booms and automatic welders  
Pipe Gang getting prepared



Description & Location: SSKP 907+325  
Unidentified bones on ROW-Possibly a bird  
Near Souris River



Description & Location: SSKP 899+450-Facing west  
Black Creek boring crew  
Some fluid released through cracks  
Clean up crew doing good job containing it



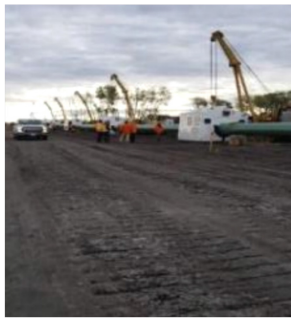
Description & Location: SSKP 908+000-Facing east  
Section for Bore crossing for Souris River  
Will be set up for Test



Description & Location: SSKP 821+100-Facing NE  
Road bore at Rd # 13  
Excavator digging on north  
Picker truck unloading matts in background



Description & Location KP-841+100- Facing E  
Worker's cleaning swamp with hydro-vac



Description & Location KP-813+200.  
Photo taken facing east.  
Welder's getting ready to weld.



Sept 19/18 Description & Location: SSKP 899+550  
Workers with SA Energy and Badger  
Cleaning the seeping fluid on surface  
Using water and suction hose to clean  
Picture taken in Black Creek



Sept 19/18 Description & Location: SSKP 850+100  
Seasonal Marsh Class 3 Wetland MB-073  
Dozer and Excavator building ramp through wetland complex  
photo facing NE



Sept 19/18 Description & Location: SSKP 812+700  
Main gang welding mainline facing west  
Very congested biggest crew on job  
Preheaters, Automated Welders Root pass, Hot pass, Cap  
and Rotoscan





Sept 19/18 Description & Location: SSKP 870+550  
Grade crew stripping and piling soil  
Dozers pushing soil and Power dozer  
Pink stakes beside dozers are 5 m buffer  
Photo facing east



Sept 20/18 Description & Location KP-841+553 137 west  
Nodwell machine hauling contaminated bulrush  
out of the wetlands at SF # 28 west and  
disposing it in the plastic trays.  
Photo taken facing east



Sept 20/18 Description & Location KP-815-100 bone yard  
Side boom moving the pipe for the welders to start welding  
Photo taken facing south.



Sept 20/18 Description & Location: SSKP 840+727  
Environmental Clean-up  
Mini Excavator digging contaminated soil  
Hydro-Vac in background facing west  
Sandbags used to contain spill



Sept 20/18 Description & Location: SSKP 841+050  
Semi-Permanent Marsh Class 4 Wetland  
Wetland ID MB-054  
Building Wetland ramp facing west



Sept 20/18 Description & Location: SSKP 840+727  
Indigenous Medicinal plant Bulrush  
used for multiple purposes including Medicinal, Food and Craft  
Facing North



Sept 21/18 Description & Location KP- 817+789  
Photo taken facing north  
Workers pre heating the pipe for the internal welding



Sept 21/18 Description & Location KP-841 + 553  
Soil wrapped and covered with poly from  
the wetlands west of SF # 28.  
Photo facing west



Sept 21/18  
Crews were disassembling the cleaning station  
as it is no longer required in that area  
Excavator removing Caepla carpet



Sept 21/18  
Pipe Gang and Poor Boy Welding crews  
working in a Semi-Permanent Marsh Class 4  
Wetland Complex MB-1039  
Phot facing NW



Sept 21/18  
Semi-Permanent Marsh Class 4 Wetland  
D6 Dozer pushing sand on wetland ramp  
Close to environmental spill site  
Photo facing NW



Sept 21/18  
Sandpiper feeding on ROW  
Reflection of south boundary stake  
Active on the ROW  
Photo facing south





Sept 22/18  
Description & Location KP-819+400 148 west  
Side booms moving the welders shacks to SF # 13 east.  
Photo taken facing south



Sept 22/18  
Description & Location KP-818-500  
Welders finished welding side booms  
moving shacks to SF # 10.  
Photo taken facing east



Sept 22/18 Description & Location: SSKP 825+490  
Seasonal Marsh Class 3  
Wetland Complex MB-1051b  
Tundra Bore/Trench Box/Welders  
Pipe clamps used to line up pipe (blue)



Sept 22/18 Description & Location: SSKP 853+000  
Semi-Permanent Marsh Class 4  
Wetland Complex MB-077  
Grade crew stripping soil by Wetland  
Photo facing west



Sept 22/18 Description & Location: SSKP 899+800  
Truck stuck from slippery conditions  
Excavator hooked up to pull it out  
Started raining more made conditions worse  
Photo facing north



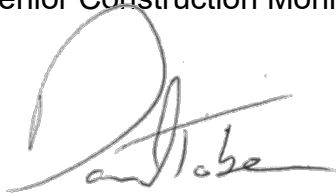
Sept 21/18 Description & Location: SSKP 860+550  
Damaged Tree close to our boundary  
Looks bad and is dangerous with branch hanging off top  
hanging off top (widow maker)  
Photo facing north

## APPROVALS



---

Lee Bear  
Senior Construction Monitor



---

Daniel Tober  
Senior Environmental Scientist

---

November 23, 2018

Date

---

November 23, 2018

Date